

Norfolk County Council proposes to make a Temporary Traffic Regulation Order (the "Order") (NTRO9877) affecting the C286 Norwich Road from its junction with A140 Aylsham Bypass for 200m northwards (the "Road") in the Town of Aylsham to facilitate new mains laying works, the Road will be temporarily closed (except for pedestrian access) for the duration of the works/period the closure is necessary which is anticipated to be from 11th to 13th August 2025, but may continue to be closed/restricted until the 24th September 2025 where the closure is still required beyond the anticipated dates.

Alternative route is via: Norwich Road, Burgh Road, A140 Aylsham Bypass.

The works promoter for this restriction/closure is: Anglian Water.

Vehicular access will be permitted to a final destination in the Road where signs indicating such access is possible and permitted are in place.

The Order shall automatically revoke on the completion of the works when the closure is no longer necessary or otherwise on the 24th September 2025 without further notice.

If necessary, the restriction could run for a maximum period of 18 months from the date the Order is effective.

A person who contravenes, or who uses or permits the use of a vehicle in contravention of the closure imposed by the Order shall be guilty of an offence.

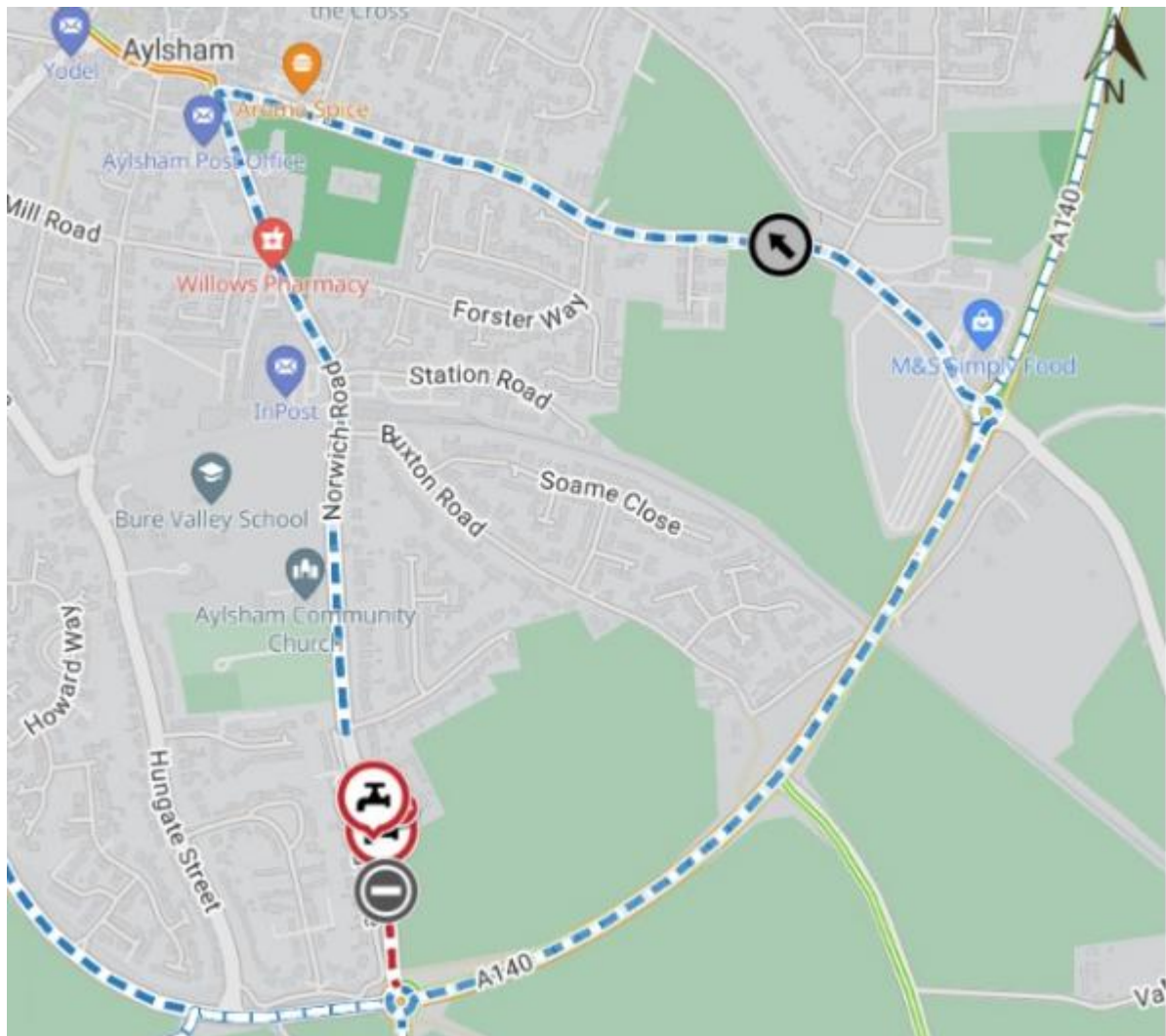
Penalty: £1000 maximum fine on conviction and/or endorsement for contravention.

In the event of the start date being delayed the new start date will be displayed on site in advance.

Full details on the closure are available at <https://one.network>. Any enquiries that cannot be answered on the one.network website should be directed to the North Area Streetworks (Community and Environmental Services Department) contactable by telephone at 0344 800 8020 or email at streetworks@norfolk.gov.uk

Dated this 1st day of August 2025.

Katrina Hulatt
Director of Legal Services (nplaw)
County Hall
Martineau Lane
Norwich
NR1 2DH



Imagery © 2025 MapTiler | Imagery © 2025 Hexagon | © MapTiler © OpenStreetMap contributors