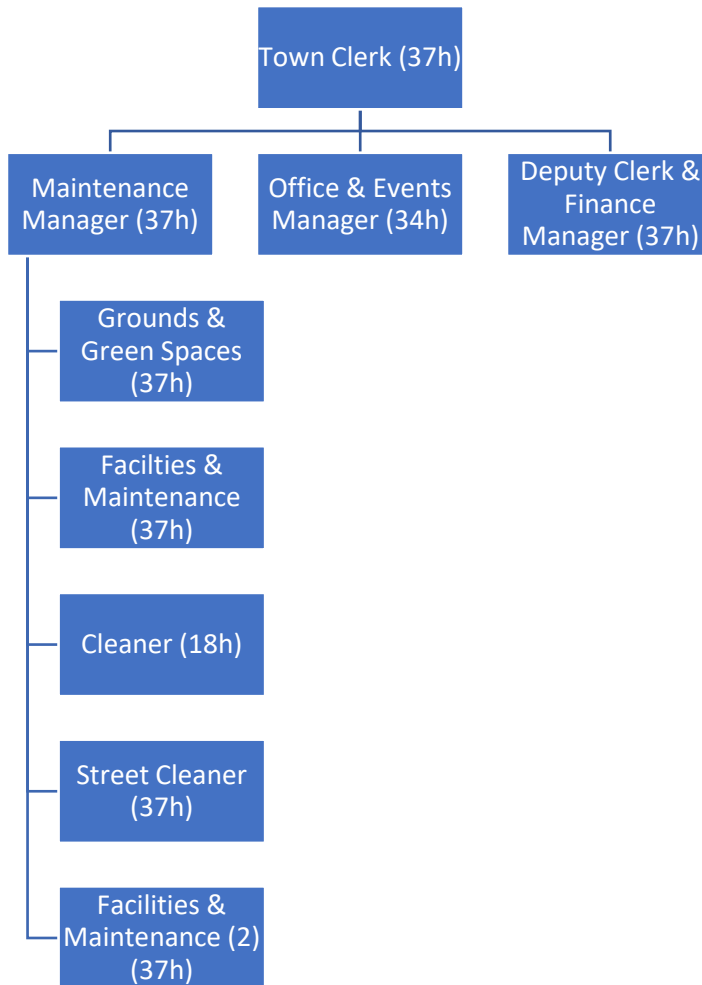


Aylsham Town Council Staff Organisational Chart



Town Clerk SCP 42-45 plus one salary point, up to a maximum of four points, for success in obtaining, or already holding any of the following relevant qualifications

- The Certificate in Local Council Administration (CiLCA)
- Certificate of Higher Education in Community Engagement and Governance – Level 1 or equivalent qualification previously awarded by the University of Gloucestershire
- The Certificate of Higher Education in Community Engagement and Governance or equivalent qualification previously awarded by the University of Gloucestershire
- The Diploma in Community Engagement and Governance or equivalent qualification previously awarded by the University of Gloucestershire
- BA (Hons) Degree in Community Engagement and Governance or equivalent qualification previously awarded by the University of Gloucestershire