

The Official
Aylsham
Town Guide

2023/2024



Local Services • Recreation • Town Map • Attractions



ClearView
Financial Consultants

Burgh Road, Aylsham, 01263 734859
Station Road, Hoveton, 01603 273590

Complimentary Initial Consultation for all new Clients

- Investment Planning & Reviews
- Inheritance Tax and Wealth Preservation Advice
- Care Cost Planning and Advice
- ISA Selection Service
- Personal Protection Policies
- Pensions & Retirement Options
- Bespoke Ethical Investments

Impartial & Accountable Whole of Market Advice

Home and Evening Appointments Available

ClearView Financial Consultants is a trading name of Martin Smith Independent Financial Adviser Ltd, a company registered in England under number 11439150 and authorised and regulated by the Financial Conduct Authority under number 944677.



MartinSmith
Probate, Attorney & Wills

Burgh Road, Aylsham, 01263 734859
Station Road, Hoveton, 01603 273590



Traditional Will Writing

Lasting Powers of Attorney

Probate and Estate Administration

Home appointments are always available

Registered in England & Wales under Company Number 7614554

Contents



Welcome	p5
Council Information	p7
Local Police	p8
Aylsham Climate Emergency	p9
History	p11-12
Heritage Centre	p13
Aylsham District Care Trust	p14-15
Health	p17
Education	p21, p23
Library	p22
Aylsham Town Map	p24-25
Places of Worship	p27, p29, p31
Aylsham Business & Enterprise Forum	p33
Local Attractions	p35
Clubs, Societies & Organisations	p37, p39
Sports Clubs/Facilities	p41
Directory of Advertisers	p46

Welcome to The Official Aylsham Town Guide 2023/2024

© Falcon Publications

The Official Aylsham Town Guide 2023/2024 has been designed, produced and published by Falcon Publications on behalf of Aylsham Town Council. No part of this publication may be reproduced without the written permission of the publishers and copyright holders.

Every effort has been taken to ensure that the contents of this guide are accurate, but Falcon Publications cannot be held responsible for errors or omissions. Whilst reasonable care is taken when accepting advertisements, the publisher will not accept responsibility for any resulting unsatisfactory transactions.

Falcon Publications

Units 10a -11 Red House Yard, Gislingham Road,
Thornham Magna, Eye, Suffolk IP23 8HH



Editor: Sarah Veness, 01379 773348

Advertising: 01379 773347

Accounts: 01379 831158

Email: info@falconpublications.co.uk

www.falconpublications.co.uk



[falconpublications@artseastmag](https://twitter.com/falconpublications@artseastmag)

Design & Artwork: Ian Foster, Copy Concept

Email: i.foster4@icloud.com

Cover photograph, by kind permission from Bure Valley Railway. Other images by kind permission of Aylsham Cricket Club, The National Trust, Aylsham Heritage Centre, Aylsham & District Care Trust, Redwings Horse Sanctuary, Ian Gravnell, Tina Ewart and The Aylsham Show.



Welcome to Aylsham



A Market Town

Situated in the heart of North Norfolk since before the Norman Conquest, you will find the country market town of Aylsham. Main routes from Norwich to the coast and King's Lynn skim its edge, and a network of lanes will lead you to the villages in the wider area. With the famous Norfolk Broads, the North Norfolk Coast and the magnificent cathedral city of Norwich only ten miles away in each direction, and the gently rolling Norfolk countryside on its doorstep, Aylsham is a central and excellent base for holidaymakers, as well as being in constant demand by those looking for somewhere to live.

The famous National Trust properties of Blickling Hall and Felbrigg Hall are nearby – Blickling is in fact only about a mile out of the town – and Oxburgh Hall is further to the west of the county. Holkham and Sandringham are also within easy reach. These are just some of the wonderful country houses near to Aylsham. For those whose preference is gardens, there are many including Mannington, Hoveton Hall gardens at Wroxham, Fairhaven Woodland and Water Garden at South Walsham, and Sheringham Park, designed by Humphry Repton. If steam railways are your hobby, the Bure Valley narrow gauge railway starts its nine mile run to Wroxham from Aylsham, and the North Norfolk standard gauge railway runs along the coast from Sheringham to Holt.

On Mondays, Aylsham Market Place bustles with stalls and the goods auctioned at the sale yard a few minutes walk away range from bric-a-brac to bicycles; there is a further general market each Friday. Every first Saturday each month, a Food

and Craft Market sells local produce in the Market Place, and at regular intervals on a variety of days there are specialist auctions of different types of antique goods in the sale rooms. Aylsham shops vary from small to medium sized supermarkets to family owned businesses. Parking everywhere is free.

Although the town's population has more than doubled since the 1960's - now over 9000 - the town remains a community, with many active societies and clubs that often come together at events in the town. The Aylsham Show that originally began in 1946 as a gymkhana on the Recreation Ground has long outgrown its former home to become one of the most successful one-day shows in the country, held at Blickling Park each August Bank Holiday Monday.

Aylsham became a Cittàslow town in November 2004, and is now part of an international network of towns that celebrate quality of life, towns that care about their heritage, local produce and skills, and their residents – and that includes our many visitors –whom we regard as “temporary residents!”

Finally, as a Town Council we have tried to produce a guide that is of help both to visitors and to present and future residents. Any suggestions that could help us improve it would be most welcome and should be addressed to the Town Clerk.

Sue Lake

Town Clerk



Installers & service engineers of Gas, Solid fuel & Electric fires and Fireplaces



- Extensive showroom
- Located next to BP Garage
- Open Tuesday to Friday 10-4pm & Saturday 10-2pm

Burgh Road, Aylsham NR11 6AR Tel 01263 733322
enquiries@heatcraftltd.co.uk
www.heatcraft-anglia.co.uk



Coxfords Butchers

Award winning,
local meats and
outside catering...



...voted East of
England's best
butcher 2017



11 Market Place, Aylsham NR11 6EH
Shop: 01263 732280
Email: info@coxfordsbutchers.co.uk



Postle

electrical retailer

instore • online • mobile
we deliver • we install • we care

 www.jbpostle.com
Click & Collect Now Available

Blomberg
seit 1883

 **euronics**

FOLLOW US
@JBPostle



Telephone: 01263 733145

Aylsham Town Council

The Town Council is based in the offices above the Town Hall in the Market Place Aylsham, NR11 6EL.

The offices are open Monday – Thursday from 9.30am to 3pm and 9.30am to 12.30pm on Fridays.

Contact details:

Telephone: 01263 733354

E-mail: info@aylsham-tc.gov.uk

Website: www.aylsham-tc.gov.uk Facebook Page - aylsham



Responsibilities

The Town Council has responsibility for:

- Maintaining the street lighting, including the replacement and the installation of additional standards (except in Red Lion St, Norwich Rd, Sir Williams Close, Henry Page Road, Bure Meadows and The Willows which are the responsibility of the County Council)
- Maintaining four properties belonging to the town (The Town Hall and 23 Market Place, both listed buildings, and the Cemetery Cottage, originally the home of the cemetery keeper and the Drill Hall)
- Caring for certain open spaces (The Staithe and Old Station Yard in Millgate, the Lychgate Garden and various play areas and amenity land on local housing developments)
- Maintaining the Cemetery and the Churchyard
- Providing and managing four allotment sites
- Managing the Market Place and its markets, including the Farmers' Markets
- Monitoring the Burgh Road and Buttsland car parks on behalf of Broadland District Council
- Carrying out Highway verge cutting on behalf of Norfolk County Council
- Providing and managing the public toilets and providing, inter alia, litter bins, dog waste bins, bus shelters
- Christmas lights and decorations
- Community events

The Town Council consists of 13 councillors who all live in or within 3 miles of the town. They are elected every four years with the last elections in May 2023. Anyone interested in becoming a Town Councillor please contact the Town Clerk via the details above.

Broadland District Council

Broadland District Council's offices are in The Horizon Building, which they share with South Norfolk District Council, accessed off the Broadland Northway near Thorpe St Andrew, Norfolk. It is responsible for planning and conservation, housing, council tax collection, benefits, refuse collection, environmental health, economic development, neighbourhood plans and neighbourhood issues, business support and rates, community grants, electoral registration, licensing, street cleaning, and health and wellbeing support.

Tel: 01603 431133

Website: www.southnorfolkandbroadland.gov.uk

Norfolk County Council

Norfolk County Council is responsible for major county wide services such as education, highways, police, fire and rescue, social services and libraries. It co-ordinates strategic, transport and emergency planning. Its main office is in County Hall, Norwich.

Telephone: 0344 800 8020

Email: information@norfolk.gov.uk

Website: www.norfolk.gov.uk

YOUR LOCAL OFFICERS

Your safer neighbourhood team

Your Local Officers



PC Lucas Ward

Lucas.Ward@norfolk.police.uk



Sgt James Marrison

SNTAyIsham@norfolk.police.uk



Insp Mike Austin

SNTAyIsham@norfolk.police.uk

What Do They Do?

Your local officers work with everyone in the community to identify and deal with current issues and concerns in the neighbourhood.

Find out more on our website at norfolk.police.uk/your-area

Did you know?

You can report any non-emergency crime or incident online at norfolk.police.uk or via the QR code here. Just scan it with your mobile phone camera or QR code reader.

Always call **999** in an emergency.



Suspicious activity? Call us on **101**.
Emergency? Always use **999**.

f Broadland Police
t @BroadlandPolice
i @norfolkpolice



NORFOLK
CONSTABULARY

norfolk.police.uk

Making Aylsham a sustainable community

In a ground-breaking partnership with local residents, Aylsham Town Council declared a climate emergency in August 2021 and are working together to achieve net zero carbon by 2030.

The community-led group formed ACE – Aylsham Climate Emergency – a committee of the Town Council based on five sub-groups, each working towards a strategy to act on the causes and impact of climate change on the town.

Already, the committee is working to establish an environmentally sound traffic system in which pedestrians and vehicles co-exist in a safe and practical manner, bought a thermal camera to advise residents on home insulation, has identified areas for a community orchard or wild flowers, and devised a map of recycling points around Aylsham where you can also dispose of items that are not accepted in other bins.

Aylsham is bordered by two rivers, the Bure, stretching from Melton Constable inland to Gorleston on the coast, and the Mermaid, a tributary of the Bure. While much of the town is housing and business premises, there are also playing fields, woodland and farmland.

So ACE is a place where groups and individuals concerned about all aspects to do with the quality of food which we eat can come to share ideas about garden sharing, food forests, and foraging for wild food.

But it's not just about reducing carbon emissions on a local scale, but also raising awareness of global climate change.

ACE has its own website and active social media accounts which highlight opportunities and alternatives as well as lobbying for change within the town and district and county councils.

The ACE committee meets on the first Monday of the month in the Town Hall – every meeting is open to the public.



Who are we?

Each group targets the main areas which contribute to the crisis:

Nature: To preserve what is good and improve what is bad in processes that support all life.

Energy: To advise and guide on energy conservation and grant funding to households, organisations and businesses in the Aylsham area.

Food: To look at sustainable food outlets in the town.

Transport: To work with the Town Council's Traffic Management Group and Broadland District Council and find funding to help bring projects forward.

Waste: To reduce, re-use, repair and recycle more waste in Aylsham, and to find ways of reducing the use of plastic.





How to get involved

Go to the ACE website ace-aylsham.org where you can contact us directly or get in touch with any of the sub-groups. You can also . . .

- Book a thermal image camera survey
- Calculate your carbon footprint
- Learn where to find recycling points in Aylsham
- Never miss a bin collection . . .

. . . plus get the latest news on what ACE is doing to meet its 2030 target.

And look for ACE-Aylsham on –

Facebook:  Twitter:  and Instagram: 



MANNINGTON
ESTATE



Walks open everyday
Boardwalk & bird hide
Gardens & Café open summer months
Weddings & Birthday parties
Season Tickets available
Events - please see website

www.manningtonestate.co.uk
admin@walpoleestate.co.uk
01263 584175

Redwings Horse Sanctuary

A fun family day out

Dog friendly!

Follow the brown tourist signs

Meet friendly rescued horses and donkeys at Redwings Aylsham, nr Norwich, NR11 6UE

Open daily 10am to 4pm until 25th September
For more information please visit our website
www.redwings.org.uk | 01508 505246

WEB www.alancookfs.co.uk

EMAIL alan@alancookfs.co.uk

9 Market Place
Aylsham
Norfolk
NR11 6EH



Alan Cook
FINANCIAL SERVICES

- Financial Planning
- Retirement Planning
- Investments & Savings
- Long Term Care Planning
- Protection & Insurance
- Inheritance Tax Planning

OFFICE NUMBER **01263 732309**

Aylsham's History



Situated on the banks of the River Bure, Aylsham has been inhabited since prehistoric times. A hoard of Bronze age metalwork was discovered in 1968 close to the High School, which shows us evidence of early inhabitants. The town of Aylsham takes its name from around 500 AD when a Saxon, called Aegel, settled here. Over time, "Aegel's ham" as it was known, became Aylsham.

It grew to become a large and important place and, when recorded in the Domesday Book (1085), it had a population of about 1000. In 2001 the census showed a population of roughly 6000.

Aylsham was famous in the 14th century for its fine linen. The "Aylsham Web" or "cloth of Aylsham" supplied the royal palaces of Edward II and III. John of Gaunt, son of Edward III, whose image we see on the town sign, was Lord of the manor at this time. Sadly though, by the mid 19th century, competition from industries in the north put an end to textile manufacture locally.

During the reign of Edward III, it was ordered that archery must be practised on Sundays and other holidays in place of all other sports which were forbidden. The Buttsland or Buttlands is where the men of the town practised the long bow, in the piece of land, now used as a car park, which originally spanned 220 yards.

The market has always been an important part of Aylsham life. In the early Middle Ages, markets would have been held in the churchyard, but as this was forbidden in 1285, the market place (which is owned by the National trust as part of the Blickling Estate) was created next to the churchyard. Permission for a Saturday market to be held in the town was granted by Henry VIII in 1518. Cattle fairs were held twice a year in addition to a hiring fair.

The market place has been the site of many different town events, such as Royal Jubilee celebrations and carnivals. The Town Hall, to the side of the Market Place, was built by a private company in 1857 as a corn exchange.

Aylsham's History

The narrow street plan of Aylsham dates back to medieval times, with many of the old timber framed buildings being given brick frontages in the 18th century. The steep pitch of many of the roofs show that they were once thatched with local reeds. Several have the characteristic Dutch gables reflecting the early close links between East Anglia and what is now Holland. The Black Boys public house was probably built in the 17th century; its present frontage dates to between 1710 and 1720; the coach entry from the market place to the stable yard at the back was blocked up in the 1930's to be replaced by what is now the bar.

Originally, traffic between Norwich and Cromer would be carried along Red Lion street and along Hungate which has cobbled edges, rather than pavements. There were many yards off Hungate where people lived in crowded and cramped conditions.

The John Soame Memorial Pump is a distinctive feature of the town. Until 1911 townsfolk drew their water from private wells which carried the risk of contamination. The John Soame pump was offered to the town as a memorial to John Soame and is 170 feet deep. Piped water supply finally reached the town in 1938.

In 1779 a canal extended river navigation to Aylsham and the town was linked to the sea at Yarmouth. Wherries used the navigation to transport goods and agricultural produce. However, during the flood of 1912 all of the locks and some of the bridges (including the one between Coltishall and Horstead) were washed out. After the flood the Navigation was never re-opened.

A parliamentary report of 1777 recorded Aylsham as having a workhouse for up to 80 inmates. In 1848-9, a new workhouse for up to 600 inmates was built at Aylsham, situated to the west of the town. It cost approximately £7,500 and was designed by William J Donthorn. The workhouse building then became St Michael's Hospital.

The landmark Church of St Michael and All Angels was constructed in the late 13th century with the tower and south porch added in the 14th. The lower part of the rood screen survived the Puritan reformers, although some of the panels were disfigured. The graveyard is also the final resting place of Humphry Repton, the famous landscape gardener, who chose to be buried in a small walled garden near the south chancel door.



Aylsham Heritage Centre



The Heritage Centre is in the Churchyard next to the war memorial. It showcases themed exhibitions about the fascinating history of this town. The exhibitions change annually so there is always something new to see. The photographic archive of over 4000 photos is also available to view and copies of prints can also be purchased.



The Heritage centre hosts illustrated heritage walks around the town too which run through the summer months. These cover all the main aspects of the history of the town to allow people to discover information ranging from Repton to the Railways and from the Workhouse to the Wherries. The town is steeped in so much history and the Heritage Centre is a great place to find out more!

The Heritage Centre is housed in the old Parish Rooms. It was built in 1890 by Benjamin Cooke, a miller in the town, for the grand sum of £400. It was equipped for £60 and then donated to the church. It opened on 1st October 1890.

The building has had many uses ranging from wedding receptions, children's parties, a temporary library and as a meeting room for the church choir and the WI. Local residents recall the choir sitting around an organ with a stove for warmth. Refreshments for meetings were often prepared on a gas stove. One resident vividly recalls being lifted through the window by the vicar to unlock the door from the inside to assist a group who had been locked out!

Entry to all the exhibitions is free. Dogs and Donations are always welcome.


Opening times:

Monday: 10.30am – 1pm

Tuesday – Friday: 10.30am – 3.30pm

First Saturday of every month: 10.30am – 1pm

www.aylshamheritage.com

 AylshamHeritageCentre

 @AylshamHeritage

Helping Aylsham Live Well



Established for over thirty-five years, Aylsham and District Care Trust is a registered charity whose mission is to improve the health and wellbeing of our community by connecting older people with each other and provide the necessary support they need to live well.

How do we do this?

Orange Blossom Café, ACT Centre:

The Orange Blossom café offers hot and cold drinks, hot and cold food including roast dinners on a Wednesday and fish & chips on a Friday.

Lunch Clubs: An opportunity for those who might

otherwise be isolated, to meet friends, socialise and get out of the house.



Social Outings: Making new friends with the benefit of visiting local attractions and enjoying lunch together.

Transport Services: Supported minibus transport to the ACT Centre for lunches, or on trips / outings in the local community.

Volunteer Car Scheme: Harnessing the goodwill of our local volunteer community to provide transport for people into the local community and to essential medical appointments.



Day Care Services: Providing support with general day care provision, as well as dementia care sessions, music therapy and other day support.

Support in the Community: Delivery of hot nutritious meals and help with light housework, shopping and companionship.

Befriending: For those feeling overwhelmed or lonely and want to meet up with someone for a chat and company. Our volunteers can help signpost to other suitable services.

Counselling: Where trained volunteer counsellors support people with a wide array of difficulties including the impact of crisis and isolation.

For more information please call 01263 733385, email reception@aylshamcaretrust.com or go to www.aylshamcaretrust.co.uk



SEE MORE, HEAR MORE!

Cecil Amey provide specialist eye care and hearing care services from our Aylsham practice to ensure your future eye and ear health. We also have a huge range of designer glasses and sunglasses, as well as a large selection of hearing aids. Please contact us for more information.

EYECARE

- Eye examinations including OCT scans and retinal photography
- Contact Lens Care Plan
- 25% off a second pair*
- Blue Light Card discount

HEARING CARE

- Wax removal appointments
- Free Hearing Health Check
- Blue Light Card discount

**33 MARKET PLACE,
AYLSHAM**
01263 734307

CECIL AMEY

*Looking Good!
Hearing Well!*

* Terms and conditions apply. See website for details.

Health



Doctors

The Market Surgery

26 Norwich Road, Aylsham, NR11 6BW
Tel: 01263 733331
www.themarketsurgery.nhs.uk

Reepham & Aylsham Medical Practice

60 Hungate Street, Aylsham, NR11 6AA
Tel: 01263 733693
www.aylshamandreepham.nhs.uk

NHS Non-Emergency Number

Tel: 111
www.nhs.uk

Dentists

Aylsham Dental Practice

21 Red Lion Street, Aylsham, NR11 6ER
Tel: 01263 732127
www.aylshamdental.com

mydentist

Burgh Road, Aylsham, NR11 6AJ
Tel: 01263 733577
www.mydentist.co.uk

Opticians

Murdoch Opticians

10a Red Lion St, Aylsham, NR11 6ER
Tel: 01263 733239
www.murdochoptical.com

Cecil Amey Opticians

33 Market Place, Aylsham, NR11 6EN
Tel: 01263 734307
www.cecilameyopticians.co.uk

Hearing Care

Cecil Amey Hearing Care

33 Market Place, Aylsham, NR11 6EN
Tel: 01263 734307
www.cecilameyopticians.co.uk

Pharmacies

Aylsham Pharmacy

6 Market Place, Aylsham, NR11 6EH
Tel: 01263 733118

Opening Times:

Monday to Friday – 8.30am-6pm
Saturday –9am-5.30pm

Willows Pharmacy

15 Frazers Yard, Aylsham, NR11 6FB
Tel: 01263 735025

Opening Times:

Monday to Friday – 8.30am-6.30pm
Saturday – 9am-1pm

Aylsham Social Club



A family friendly
Members Club
in the heart of Aylsham

facebook

**Darts, Pool, Snooker,
Quiz nights & Bingo
Regular entertainment**

Sky & BT Sports

New members always welcome

Aylsham & District Ex Servicemen's & Social Club

64 Hungate Street, Aylsham, NR11 6AA

Tel: 01263 732182 email: aylshamsocialclub@gmail.com



Fish Deli

Selling fresh wet fish & seafood from local suppliers
Wednesday - Saturday 8.30 - 12 noon

Cocktail Bar

Serving Norfolk Wines, Ales & Lagers
Thursday - Sunday 12 noon - 11pm
Tapas Served 12 - 3pm & 5 - 9pm

11 Red Lion Street, Aylsham NR11 6ER

07778 546825

www.ms faylsham.co.uk

Find us on



Removals & Storage

Professional Reliable Service



SOVEREIGN  REMOVALS

Telephone: 01603 652011

07961 185511

www.sovereignremovals.co.uk

BENBURGESS  **JOHN DEERE**
www.benb urgess.co.uk

AGRICULTURE | CONSTRUCTION | GROUNDSCAPE



VISIT OUR SHOWROOM

Lawn mowers - hedge trimmers chainsaws - strimmers - leaf blowers.
Plus a full range of gardening equipment & DIY tools,
country & outdoor clothing, footwear, toys & merchandise.

SALES | SERVICING & REPAIRS | PARTS | HIRE

Ben Burgess Aylsham | Industrial Estate, Dunkirk NR11 6SU

01263 734311 | www.benb urgess.co.uk

Open Mon - Fri 07.30 - 17.30 | Sat 07.30 - 11.30



Specialists in Auto Electrics & Diagnostics



Got an engine fault... or dash lights on?... Not a problem. We can check and repair all electrical faults with our state of the art diagnostic equipment. *All makes and models covered.*

- MOTs, Repairs, Checks & Servicing
- Tyres & Puncture Repairs
- 3D Four Wheel Alignment
- Aircon Re-gas & Repairs (R134a & R124YF)
- Dealer Level Diagnostics
- Key Programming, cutting & battery replacement
- Light Commercial & 4X4
- Tow Bar Supply & Fitting
- Trailer Servicing & Repairs
- Welding
- Hydraulic Injector Removal

FREE

at JLH we look after you.....

FREE Bulb fitting subject to vehicle

FREE Tyre tread and pressure check

FREE Antifreeze check

FREE Collection & Delivery service

FREE Courtesy cars



JLH AUTOS

The Garage On Your Doorstep

St Michaels Service Station • Cowston Road • Aylsham • NR11 6EB

01263 732172 • 07919 046813

jeremy_harrison_999@yahoo.co.uk

NORFOLK CHILDREN'S BOOK CENTRE



AN INDEPENDENT BOOKSHOP ESTABLISHED FOR 35 YEARS
SPECIALISING IN BOOKS FOR CHILDREN AND TEACHERS

Come to NCBC

to see an **AMAZING** range of the **BEST** books for Children and Teachers. Often described as an **ALADDIN'S CAVE**, and with **FREE** Refreshments and Parking, **FREE** Wi-Fi and all the help you need to pick out that **NEXT GREAT READ!**

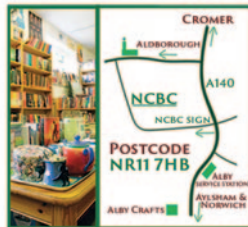


ncbc.co.uk
Tel. (01263)761402
Email marilyn@ncbc.co.uk
FIND US ON

Opening Hours

Mon-Fri 9-5 Sat 10-5
Closed Sundays & Bank Holidays
BOOK TOKENS ACCEPTED

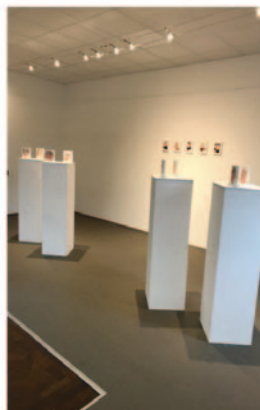
HOW TO FIND US



Going North on the A140 between Alby and Cromer pass Alby Service Station then take the next left turn where you see the NCBC sign.

Broadland Framers & Gallery

Penfold Street, Aylsham, NR11 6ET



www.broadlandframers.co.uk - info@broadlandframers.co.uk
01263 478250 Open Tuesday - Friday 9am-4pm Saturday 9am-3pm

Education

Nursery and Primary Schools

St Michael's Church of England VA Primary and Nursery School

Tel: 01263 732260

www.stmichaelsaylsham.co.uk



We believe that there is a distinctive quality to St Michael's School, one which can be expressed in many ways and means different things to different people. It may be its family feel, its focus on relationships, its positive approach to education, its Forest School, its strong connection to St Michael's Church, the care and respect it cultivates and nurtures, or it may be our constant drive to improve, for our children, families and whole school community.

Our school and nursery continue to develop in many exciting ways so that it can continue to provide a rich and happy experience for our children.

All staff are proud to belong to a team that is committed to achieving high standards and providing the very best opportunities for the children in its care. Staff, supported by governors, work hard to deliver an inspiring and challenging curriculum, to prepare children for their next steps in education, to help them acquire the skills and confidence they need, and to inspire children to pursue learning for the rest of their lives.

The best way to find out about our school and nursery is to come and visit, to see us in action and meet staff and children. A telephone call to the school office on 01263 732260 is all that is needed to arrange this.

We look forward to welcoming you to our school and nursery, and to creating happy and successful partnerships with all our new children and families.

Mr John Neenan, Headteacher

John Bear's Nursery

Tel: 01263 734 028

www.johngaunt.norfolk.sch.uk



John Bear's Nursery is a purpose built nursery situated on the

grounds of John of Gaunt Infant and Nursery School, and is part of Aylsham Learning Federation. Our fabulous facilities include an outdoor area with a barked area and mud kitchen, a covered veranda, a grassy area with hillocks and an all-weather artificial grassed area. Our aim is to nurture a love of learning, to support independent explorers, to ensure children achieve excellent progress in all areas of their development. We aim to encourage happy, confident children who feel secure that their ideas and emotional needs will be valued. To ensure this happens we use 'in the moment' planning. Planning in the moment involves engaging in the play of children, observing and assessing their interests, motivations, understanding and skill levels and using this knowledge to support and extend these further through purposeful and thoughtful teaching opportunities.

We are open 50 weeks a year offering flexible hours from 7.30am to 6pm and both 15 and 30 hour funded places. Children can join John Bear's Nursery from their third birthday. Our dedicated team includes qualified teaching staff and nursery practitioners.

John of Gaunt Infant & Nursery School

Tel: 01263 732 844

www.johngaunt.norfolk.sch.uk



John of Gaunt is part of the Aylsham Learning Federation, which also encompasses both Bure Valley School and Aylsham High School. All three schools work very closely together to ensure that children's education is developed from Nursery to the end of their time at secondary school. We share the same ethos, visions and values and know that these will secure your child a fabulous education, nurtured in supportive environments, with high quality teachers and support staff.

We promote a happy, secure and caring environment where learning is enjoyable and rewarding for both children and adults. We provide a broad and balanced curriculum which enables children to develop positive values and attitudes, skills and knowledge, within a co-operative and supportive framework. We believe that all children are entitled to a creative curriculum, which is knowledge based, but allows them to explore all aspects of their learning in different ways.

What's on at Aylsham Library

Library Opening Times



Monday 10am-7pm

Tuesday 10am-7pm

Wednesday 2pm-7pm

Thursday 10am-7pm

Friday 10am-7pm

Saturday 10am-4pm

Bounce and Rhyme Time: Monday 10.30am-11.00am

Songs and music for pre-schoolers and their parents or carers.

Just a Cuppa: Monday 11am-12noon. Free cup of tea or coffee for everyone, and a chance to meet & chat to others.

Digital Support Sessions: Thursday 11am-1pm. Book with library staff for free computer support with our friendly volunteer.

Board Games Group: Wednesday 5pm-7pm. Come & join in, bring a game you like or use ours.

Craft workshops: currently ad hoc, check with staff or FB for info.

Children's Storytime: Friday 3.30pm.

Children's Craft: Saturday 10.30am-12noon.

Lego Club: Saturday 12noon-2pm.

We also have a Housebound service for those needing books delivered at home, baby-weigh scales, audio books, e-books, e-magazines, e-audio & lots of other things.

Find us on Facebook: www.facebook.com/AylshamLib
Or www.norfolk.gov.uk/libraries for general library info.

Aylsham Library 01263 732320

Education

Primary

Bure Valley School

Tel: 01263 733393

www.burevalleyschool.org.uk



Bure Valley School is a thriving community school that is devoted to the education of the whole child. We are research informed and try to think deeply about our teaching, the learning process and our curriculum design. We are unwavering in our pursuit of excellence, and believe that all children can achieve in a climate of care, creativity and challenge. Firm in our belief that children come first, we strive to ensure all pupils feel safe and well cared for. We actively promote and live our co-operative values in our everyday actions.

We are part of the Aylsham Learning Federation with John of Gaunt Infant and Nursery School and Aylsham High School. Duncan Spalding, as Executive Headteacher, oversees all three schools to ensure we work very closely and nurture a collaborative and continuous approach to learning.

Secondary Schools

Aylsham High School

Tel: 01263 733270

www.aylshamhigh.com



Aylsham High is a popular and successful community school that enjoys an excellent reputation for providing a high standard of education. We provide students and colleagues with a welcoming and supportive learning environment. This helps to create a caring working atmosphere that enables students to reach their full potential, intellectually, physically, spiritually and ethically. We work hard to challenge all students to do their very best and make the most progress possible whatever their starting point.

Aylsham High School, along with the other Aylsham Learning Federation schools (Bure Valley School and John of Gaunt Infant and Nursery School), is also an active member of The Aylsham Cluster Trust, a co-operative of local schools and organisations whose strong collaboration helps us to provide an incredibly rich curriculum offer and provides good school to school support. Our work with Aylsham Cluster also encompasses our charitable organisation The Aylsham Community Trust (families) who endeavour to support our children and families across the Trust in areas of social and mental health, lifelong learning and raising expectations.

We believe it takes a whole community to educate a child and our school is at the very heart of the wider Aylsham Community.





Keeper's Cottage

PETERSON'S LANE

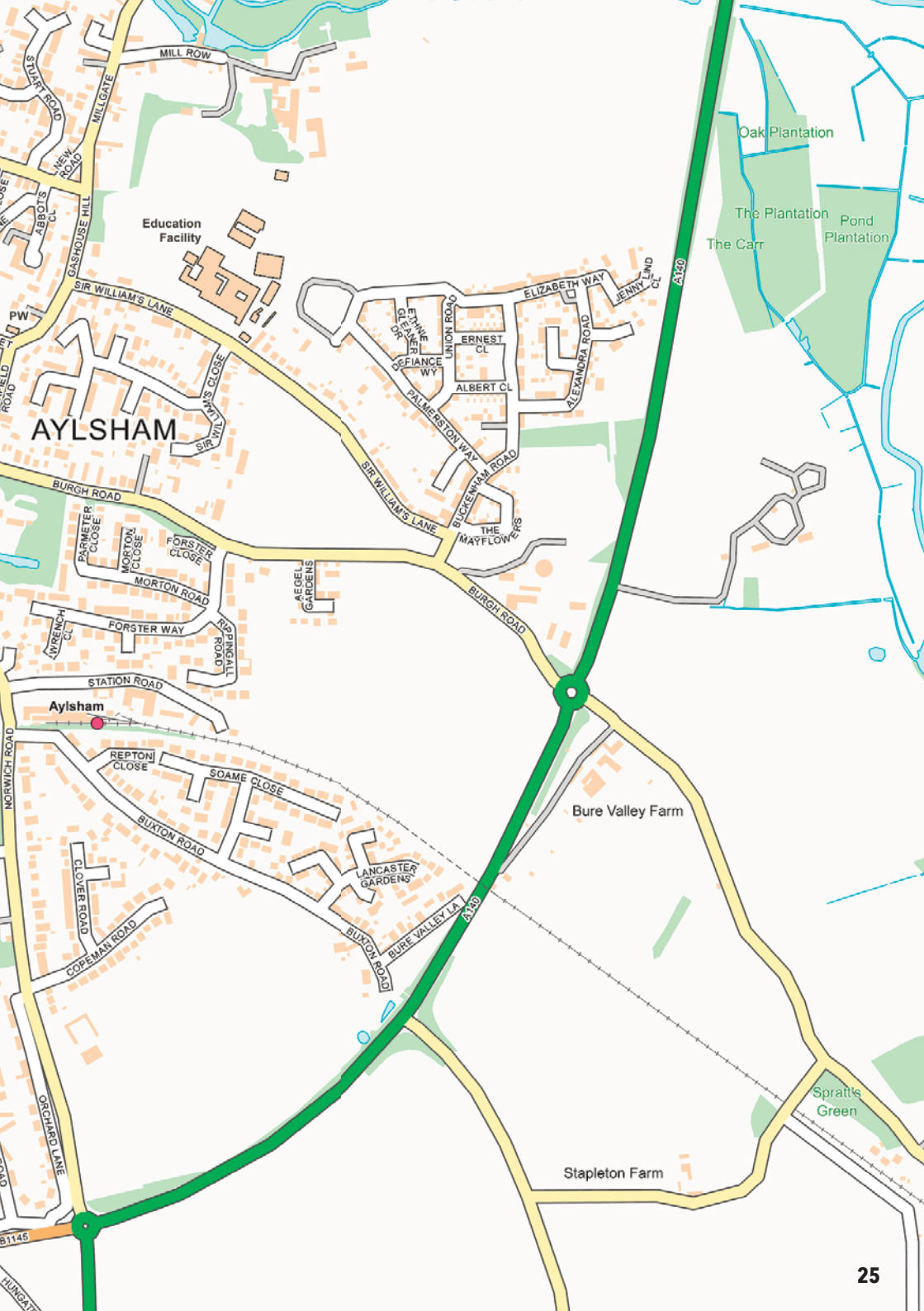
Education Facility

Fire Station

Library

Education Facility

Contains OS data © Crown copyright and database right (2023).



AYLSHAM

Education Facility

Oak Plantation
The Carr
The Plantation Pond
Plantation

Aylsham

Bure Valley Farm

Spratt's Green

Stapleton Farm

Dunkirk Garage

MOTS, SERVICING & REPAIRS TO ALL MAKES OF cars, van, commercial vehicles & motor homes.
Courtesy Car also available.

MOTs • CAMBELTS • ENGINE DIAGNOSTICS

CLUTCHES/GEAR BOXES • BATTERIES & EXHAUSTS

TYRES FITTED & BALANCED • AIR CON RECHARGE



Tel: 01263 732900

Dunkirk Road, Aylsham, NR11 6SU

www.dunkirkgarage.com | Email: info@dunkirkgarage.com

**ALSO AVAILABLE
SECTIONAL AND UP AND
OVER GARAGE DOORS**



**PRICES FROM £899 INC VAT
WITH WIRED SAFETY EDGE**

**REMOTE CONTROLLED ROLLER GARAGE DOORS
FITTED FROM £899 INC VAT WITH FIVE YEAR WARRANTY**

Made-to-measure (Max width 2500mm – Max height 2400mm)
Wide range of colours. **Old door & frame removed. Free quote.**
5 year warranty included. Larger doors available. Call for prices.



01603 737183 – 07834 408089

sales@twf-rollergaragedoors.co.uk

www.twf-rollergaragedoors.co.uk



Places of Worship



Aylsham Parish Church

"The Church in the Market Place with a heart for community"

Aylsham Parish Church is dedicated to St Michael & All Angel's and is a Grade 1 Listed building located in the heart of Aylsham's Market Place. We are open every day, so please come in for a time of private reflection and peace or perhaps come and join us for one of the many activities that we offer. As a church we welcome all people and not just those who join us for our Sunday worship.

Worship & Sunday Services

- 8.00am: Holy Communion (quiet & traditional)
10.15am: Holy Communion with Choir
Breakfast Church @TEN (every 4th Sunday)
4.00pm: Choral Evensong (every 4th Sunday)

There is also a service of Holy Communion every Wednesday at 10.30am.

(If you or a family member are unable to attend services due to illness we are always happy to visit)

Weekday Activities (please get in touch for more details)

- Monday: Monday Sale, Foodbank & Cafe
Tuesday: Julian Group (Monthly)
Bell Ringers
Find your Voice
Wednesday: Evening Study Group

Thursday: FREE Baby & Toddler Group from 9am

FREE After School Group

Friday: New Brew Café

Pilates

Choir

We also host regular Concerts, Half Term Activity Days, Free Summer Activities for children, talks and lectures.

Life's Celebrations

Please get in touch with us if you would like to talk about celebrating Christenings, Weddings or a special anniversary. We are also happy to speak to you about funeral arrangements or memorials and you can always come into church to light candles to remember special people.

Contact:

Revd Canon Julie Boyd (Team Rector)
01263 704457

Email: aylshamparishchurch@gmail.com

Web: www.aylshamparishchurch.org.uk

Facebook: www.facebook.com/aylshamparishchurch

Find us also on Twitter @aylshamchurch and Instagram #aylshamparishchurch

The Revd Canon Julie Boyd
Team Rector - Aylsham & District Team Ministry
The Vicarage, Cawston Road, Aylsham, NR11 6NB
t. 01263 731102
e. julie.boyd@dioceseofnorwich.org



THE BLIND PIG

BISTRO & WINE BAR

The Blind Pig is an intimate, cosy, wine bar & bistro located in the heart of North Norfolk, in the wonderful town of Aylsham. We serve a small seasonal menu alongside some sharing boards, snacks and sandwiches, specials and Sunday lunches. We pride ourselves on using the best fresh, locally sourced, produce. Plus a vast range of wines, great local and continental beers on tap, beautiful cocktails and fresh coffee - there is something for everyone.



For more information or to book either for meals or drinks or to book our holiday cottage please telephone **01263 649070**, email theblindpigaylsham@gmail.com check out our website www.theblindpigaylsham.co.uk

The Blind Pig Cosy Cottage

We also have a beautiful holiday cottage available for rent either daily or weekly, sleeps upto 4 people

50 Red Lion Street, Aylsham, Norfolk NR11 6ER



Places of Worship



Photo: Tina Ewart

St John of the Cross Catholic Church

The Church of St John of the Cross in White Hart Street is the focal point for Catholics in Aylsham and surrounding villages. Sunday Mass is at 9am and is attended by a lively and vibrant congregation. Visitors are always welcome. There is also a weekday Mass on Friday morning at 9.30am.

Contact: 01692 403258

Parish Priest email: parishpriestfrpeter@gmail.com

Parish Secretary email: rcnwalsham@gmail.com

www.sacredheartnorthwalsham.com

Quakers in Aylsham

The term 'Quaker' was a nickname applied in the 17th Century to the reformers associated with what became known as The Religious Society of Friends. Today we are an open community who share a way of life, not a set of beliefs. Our unity is based on shared understanding and a shared practice of silent worship - a communal stillness where anyone present may be led to speak.

We seek to experience God directly - internally, in relationships with others, and with the world. Our Meeting is one element in a network across the country. All offer a welcome to anyone who might wish to attend.

Quakers try to put their faith into action by living with honesty and integrity. This means speaking the truth to all, including people in positions of power. Our commitment to peace arises from the conviction that love is at the heart of existence and that all human beings are unique and equal. For further information see www.quaker.org.uk

Our meeting house is located in Peggs Yard, off Red Lion Street. Accessible for the disabled. Meeting for Worship 10.30-11.30 on Sundays and on the second Wednesday of the month at 12 noon.

Website: www.aylshamquakers.org.uk

Facebook: Aylsham Quakers

Aylsham Methodist Church

Lay Pastor - Linda Edwards, 01263 732340

ledwards47@hotmail.co.uk

- Sunday Morning Worship 10.30am
- Midweek Prayer & Bible Study Group. Contact Peter Swan on 01263 732856
- Worship on Wednesday Service 2.30pm
- 'Care & Share' Groups
- Tiny Tots Mondays & Wednesdays 9.30-11.30am
- Inspired Gardeners 10.30am-12 noon every 2nd Thursday
- Art & Craft Group 2pm Thursdays
- Coffee 'n' Cake 10am-12 noon Tuesdays

To the rear of the building we have a large hall with a fully-equipped kitchen and a large garden which is available to hire.

For more info call Margaret Phillips on 01263 731183.

www.northnorfolkmethodist.org.uk/aylsham

Ivan Fisher

Independent Funeral Homes Ltd

Established 2005



Lewis Cook, Ivan Fisher & Paul Fisher

We are proud to be Aylsham's only family run,
independent funeral home and we're always
here when you need us, 24 hours a day.

01263 735161

www.ivanfisher.co.uk

The Old Bank, 2-4 Norwich Road, Aylsham, Norfolk, NR11 6BN

The New Forge - a warm welcome awaits you!



Tim and Koi offer a warm welcome at The New Forge, Aylsham, a restaurant of English and Thai fusion.

Serving freshly prepared Thai and English food six days a week, the extensive menus cater for all ages and palates. Booking is always recommended as despite being able to seat over 130 people, we do fill up quickly during peak periods.

However, we will always try to find you a table as soon as possible if you don't have a booking during these times.

On warmer days, our covered patio area and our extensive garden offer additional seating for that relaxing outdoor experience, and our children's play area offers entertainment for the younger ones.

Food served

Tuesday-Saturday 12.00 -14.30 & 17.00 -20.30

Sunday 12.00 -20.00

Closed Mondays except for Bank Holiday

01263 734275

www.thenewforge.co.uk



The New Forge, Norwich Road, Aylsham, Norfolk NR11 6UD

Places of Worship



Aylsham Community Church

We meet every Sunday to worship God and enjoy being a church family together. Our services are informal in style with contemporary worship music, teaching from the bible and the opportunity to receive prayer. During our time together there are groups for children and youth.

Our mornings start with refreshments from 10am and our service begins at 10.30am - everyone is welcome!

The following activities are run by members of the church:

Aylsham Community Fridge - enables residents and businesses to share surplus food and for anyone to help themselves to quality food that would otherwise be wasted.

Unity Cafe - A place you can come and have a drink, stop for a minute, take a moment to think.

Come as you are with friends or on your own.

CAP Money Course - A free 4-week course to help you manage your money better, learn to save and spend well. On the course you will learn budgeting skills and a simple money management system that really works.

For more information visit our website
aylshamcommunitychurch.org

Aylsham Community Church meets at Jubilee Family Centre, Norwich Road, Aylsham, NR11 6JG.

Phone: 01263 733332

Email: info@aylshamcommunitychurch.org

The Salvation Army

The Salvation Army is a well known Christian Church and charity and is situated on Hungate Street.

Our Sunday worship commences at 10:45am. On the first Sunday of the month we have a Songs of Praise at 3pm. All are invited to either service and will receive a warm welcome.

There is also a friendly atmosphere at our weekly coffee morning each Monday from 9:30am to 12pm. For information please contact the Corps Officer on 01263 733883.

We also run a community shop in Red Lion Street selling secondhand clothing, small items of furniture, bric-a-brac, books, jigsaws etc.

For information regarding the shop please contact Jenny or Maggie on 01263 735713.

www.salvationarmy.org.uk/aylsham



MURDOCH

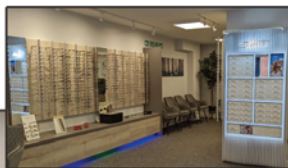
Opticians www.murdochoptical.com

★ We have moved premises

Sight Testing

Spectacles

Soft Contact Lenses



Easy access
All ground floor

OPENING TIMES

M	9-1	2-5
* T	9-1	2-5
W	9-1	Closed
T	9-1	2-5
* F	9-1	2-5
* S	9-12	Closed
S	Closed	*sight testing available

10a Red Lion Street, AYLSHAM NR11 6ER tel 01263 733239



WROXHAM TRAVEL

CRUISES

PACKAGE HOLIDAYS

FLIGHTS ONLY

COACH TOURS

WORLDWIDE TAYLOR-MADE ITINERIES

NATIONAL EXPRESS BOOKING SERVICE

For all your travel requirements pop in for our friendly free booking service with our very experienced staff.

t: 01263 733464 e: wroxhamtravel@gmail.com



Blossom & Green

Ladies fashions - including White Stuff, Alice Collins, Lilly & Me, Barbara Lebek, Marble, Adini and many more.
Mens fashions, Ladies shoes/handbags and gifts.

29 Red Lion Street, Aylsham NR11 6ER Tel: 01263 734110

Supporting Commerce and Community

Aylsham Business & Enterprise Forum (ABEF) is the local partnership supporting the business community and organisations in Aylsham.

ABEF was formed from the Aylsham Traders Association following the Portas Review of England's high streets in 2011 as it was felt the traditional business chamber concept needed updating.

It is now an integral part of the commercial hub of the town and enjoys support from local voluntary organisations, clubs and societies as well as Aylsham Town Council, Broadland District Council and has close links with Aylsham High School.

We are proud of our Cittaslow town and believe we can help facilitate business-to-business interaction alongside community organisations so members get a broader understanding and can build on connections.

What we do

- ABEF acts as a forum for ideas and innovation and continues to support, communicate and engage with the district business community in Aylsham.
- We work with the Town Council and District Council to ensure that Aylsham has a voice in matters affecting businesses and organisations within the area and to support and promote our town. Currently we are working on the transfer of the Discover Aylsham website to the "visit" series operated by the District Council. This will also enable the Aylsham App to be retained and developed in the future; something for residents and visitors to use with information on all the town's activities, businesses and history.

- Throughout the year, there is a varied programme of meetings including business breakfasts, networking events and talks by local experts on a wide range of subjects.
- We believe that working together on civic projects such as car parking issues, town signs, events, planning matters, and charity events keeps Aylsham as special and vibrant as it is.

Membership

ABEF offers its members:

- Networking opportunities.
- The facility to be involved in, support and benefit from local events and activities.
- Detailed listings on the Forum website, VisitAylsham. The aim of all our members is to strive to increase the footfall both in the town centre and for out-of-town businesses.

Join us

To become a member, simply contact us using the link below.

sec@abef.org.uk

www.abef.org.uk





National
Trust

Lasting memories

made at

Blickling Estate

One day is never enough...

Discover a complete Norfolk estate with something for everyone. Visit the breath-taking Jacobean mansion set in magnificent gardens and surrounded by historic parkland in the beautiful Bure meadows.



© National Trust 2023. Registered Charity no. 205846. Photographer © National Trust Images/Andrew Barker

nationaltrust.org.uk/blickling-estate

For everyone, for ever

BURE VALLEY RAILWAY

STEAM TRAINS TO THE NORFOLK BROADS

BOOK ONLINE AT WWW.BVRW.CO.UK



ALL ABOARD FOR A GREAT DAY OUT!

Trains from Aylsham or Wroxham Station

Aylsham Station, Norwich Road, Aylsham, NR11 6BW - 01263 733858

Local Attractions



Aylsham has many attractions for all the family right on its doorstep.

The National Trust's Blickling Hall is a magnificent Jacobean house, complete with stunning gardens that was home to the Boleyn family from 1499-1505. Tour the house, enjoy the formal garden or visit one of the many exhibitions held here.

The Estate is also home to many events including its popular, traditional summer Prom. The Blickling Estate's extensive parkland has many amazing sights including the Tower, Great Wood and Mausoleum. Their multi-use trail offers good access to walks or cycle rides whatever the weather. There is also a second-hand book shop, plant centre, courtyard cafe and local pub The Buckinghamshire Arms is the perfect place to recharge your batteries after a fun, family day out.

Each August, the popular Aylsham Show comes to the Blickling Estate offering the chance to watch a range of displays, listen to music, sample fantastic local food and drink and keep the children entertained with a range of activities.

Steam train fans should head for the lovely Bure Valley

Railway. Here you can journey south through picturesque Norfolk countryside to the town of Wroxham and back on Norfolk's longest narrow gauge railway. You can even combine your steam train ride with a boat trip on Wroxham's Broad. The Railway holds many special events throughout the year including Santa Trains and the chance to drive a train yourself.

Head to Redwings Horse Sanctuary in the town for the chance to meet and even cuddle a friendly horse or donkey. The charity has five visitor centres across the county and works tirelessly to rescue and care for badly treated animals. With free entry and free parking, Redwings is great for a family day out.

Film-lovers should head to Aylsham Picture house, at Aylsham Town Hall, to watch a wide range of movies with tickets available from Barnwells Newsagent in the Town Square.

There are many other local attractions within easy reach of Aylsham including the Mannington Estate, Felbrigg Hall, the popular North Norfolk coastline, the fine city of Norwich and the iconic Norfolk Broads.

Commercial & Private Legal Services

Clinical Negligence ■ Debt Recovery ■ Employment ■ Family
 Notary Public ■ Personal Injury ■ Will, Trusts & Estate Planning
 Power of Attorney & Deputyships ■ Commercial ■ Conveyancing
 Commercial Property ■ Dispute Resolution ■ Charities

Regulated by the Solicitors Regulation Authority No 50602 Authorised and Regulated by the Financial Conduct Authority

Norwich
 Cambridge House
 26 Tombland
 Norwich NR3 1RE
 01603 615 731

Aylsham
 1 Norwich Road
 Aylsham
 NR11 6BN
 01263 734 313

Cromer
 10 Church Street
 Cromer
 NR27 9ER
 01263 512 003

North Walsham
 4 Grammar School Road
 North Walsham
 NR28 9JH
 01692 404 351

Wymondham
 10 Fairland Street
 Wymondham
 NR18 0AW
 01953 857 578

info@hansells.co.uk ■ www.hansells.co.uk

www : radcad.co.uk



Richard ■ **C** Anderson-Dungar MCIAT / ACIOB
A rchitectural Technologist
D e s i g n i n **A** rchitecture ■

Blacksmith's Cottage. Colby Road, Banningham, Norwich, NR11 7DY
 L / L : 01263 732530 M : 07887841620 e : richard@radcad.co.uk

Clubs, Societies & Organisations



Army Cadet Force Aylsham Detachment

www.armycadets.com

Aylsham Blind Club

Contact: Ray Horne, 01263 731347

Aylsham in Bloom

www.aylshaminbloom.weebly.com

Aylsham Band

Contact: Jane Cordukes, 01692 652209

Aylsham Chess Club

Contact: Jonathan Reeve, 01263 733744

aylshamchessclub@gmail.com

Aylsham Country Market (Friday morning)

Contact: Deby Kidd, 07765 934850

Aylsham & District Flower Club

Contact: Crystal Dyball, 01603 291190

Aylsham & District Probus Club

Contact: Chris Corby, 01263 479901

Aylsham & District Wildlife Society

aylshamwildlife@outlook.com

Aylsham & District U3A

Contact: Kevin Ross, 07963 082933

Aylsham Ladies Walking Group

Contact: Judith Cantell, 01263 733807

Aylsham Local History Society

aylshamhistory.org

Aylsham and North Walsham Bridge Circle

Contact: Ann Melville, 01263 733889

Aylsham Picture House

www.aylshampicturehouse.com

Aylsham Roman Project

Contact: www.aylshamromanproject.com

Aylsham Round Table

Contact: Nick Swales, 07949 056212

Aylsham Scouts/Cubs and Beavers

www.scouts.org.uk



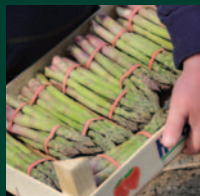
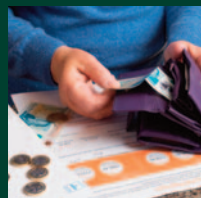
C T Baker Budgens of Aylsham

Your local supermarket
for local produce

- Fresh Food & Groceries
 - Home Delivery
 - Cellar
- Home & Garden
 - Bill Payments
- In Store Post Office
- Local Mobile Post Office

10% OFF

off your shopping on presentation of
your official Aylsham Town Guide
See in-store for terms & conditions
Offer ends 31st October 2023



Visit us:
14 Norwich Road
Aylsham
NR11 6BN

Monday to Saturday:
7am to 7pm
Sunday:
10am to 4pm

Contact us:
t: 01263 733215
e: admin@budgensaylsham.co.uk
[@CTBakerBudgens](https://www.instagram.com/CTBakerBudgens)

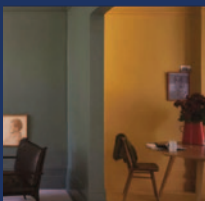


CT Baker

Established 1770

Serving North Norfolk for
over 250 years

- Heavy Building Materials
- Timber & Sheet Materials
- Light Building Materials
 - Painting & Decorating
 - Plumbing & Heating
 - Bathroom & Kitchen
- Doors, Windows & Joinery
- Landscaping & Gardening
 - Fuel (Coal, Gas & Logs)



CT Baker Ltd Aylsham | NR11 6FD | 01263 733834 | www.ctbaker.co.uk

Clubs, Societies & Organisations

Aylsham Twinning

Contact: Ruth White, 01263 733201

Aylsham WI

Contact: Claire Alban, clairealban@hotmail.com

Baby Bounce and Rhyme Time, Aylsham Library

Contact: 01263 732320

Cittaslow Aylsham

Contact: Town Council, 01263 733354

Girlguiding Norfolk (Rainbows, Brownies, Guides and Rangers)

Contact: 01603 737996 / www.girlguidingnorfolk.org.uk

Inspired Gardeners

Contact: Pat Horne, 01263 731347

Norfolk Freemasonry (Suffield Lodge)

Contact: Gerald Robins, 07921 824873

Singing for Health, Wellbeing & Fun with Playing for Cake

Contact: Tina Blaber, 07771 605188/ tina@playingforcake.uk

Rotary Club of Aylsham

Contact: Ian Stevenson, 01692 402440

www.rotary-ribi.org/clubs/homepage.php?ClubID=453

Slow Food Aylsham

www.slowfoodaylsham.org.uk

The Royal British Legion Aylsham & District Branch

Contact: Gary Moore, 01263 734153



Photo: The Aylsham Show

If you would like your club, society or organisation included in the next Aylsham Town Guide, please email the contact name and telephone number to sarah@falconpublications.co.uk



Sports Clubs/Facilities

Aylsham Badminton Club

Contact: macyspj@hotmail.co.uk

Aylsham Bowling Club

Contact: Francis Dodd, 01263 734217

Aylsham Boxing Club

Contact: Rob Wright, 01263 735411/07977 001557

Aylsham Football Club

Contact: Ian Potter (Chairman), 07944 915310

Graham Grant (Club Secretary), aylshamfc@hotmail.com

Aylsham Junior Netball Club

Contact: Sarah Collins, prior0607@icloud.com

Aylsham St Giles Cricket Club

Contact: Jeremy Cocks, 07764 210439

Aylsham Table Tennis Club

Contact: Sally Humphrey-Davies, 07711 667177

Aylsham Tennis Club

Contact: Robert Harmon (Membership Secretary),
secretary@aylshamtennisclub.co.uk

Coaching: Gareth Goldson, 07789 724668,
ggoldson24@hotmail.com

ESKA Karate School

Contact: Jason Hitchings, 01603 418751

Aylsham Sports Hub

Tel: 01263 738966



www.aylshamhigh.com/aylshamsportshub

We offer excellent sporting facilities for use 7 days a week for the local community. Our swimming pool is open all year round for lane and family swim sessions. We run Aylsham Swim Academy which holds swimming lessons for children of all ages and abilities. Children's sporting activity sessions 'All Stars' take place during the school holidays, along with intensive swimming courses. A range of exercise classes take place at Aylsham Sports Hub including early morning circuits, both trapeze and hatha yoga, BoxFit, Zumba, Clubbercise and aqua classes. Memberships are available for swimming and exercise classes. We also have an FA approved, all-seasons, floodlit 3G pitch which is available to hire and is suitable for both training and matches. Badminton and tennis courts are also available to hire.

Aylsham Sports Hub is wholly owned by Aylsham Community Organisation. All profits are re-invested into the schools of Aylsham Learning Federation for the benefit of the children, their families and the community.

Aylsham FC / Youngs Park

As a Community Football Club, we have created a fantastic Community facility (by Marriotts Way).

Our football club and Youngs Park facility is 100% run by volunteers and we are open 52 weeks of the year to the community.

Over 750 people visit the facility weekly including Slimming World, Fitness Classes and 30 Football teams (girls, boys, men, women, Vets and Walking football). Our profits are reinvested and we have actively secured £100k in grants since opening to ensure we are a credit to our community. A new 3G pitch will be built for Spring 2024.



At Your Service

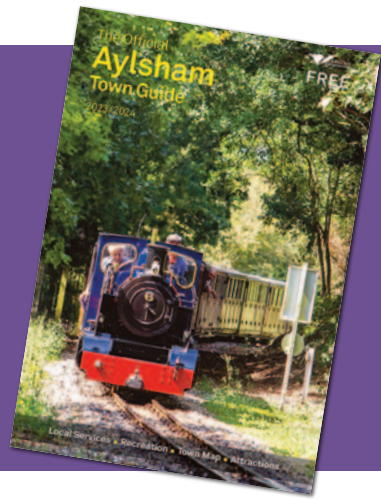
To include your business in the next

Official Aylsham Town Guide

call 01379 773347 (Advertising)

01379 773348 (Editorial)

or email: gary@falconpublications.co.uk



COOKS

ELECTRICAL SERVICES LIMITED

FOR ALL YOUR ELECTRICAL REQUIREMENTS

Agricultural, commercial, domestic, industrial, new builds, rewires, new sockets, lights, test & certification, electric car charging points, solar panels and battery storage.

Tel: 01263 735544

Mob: 07760 481789 or 07979 982570

www.cookselectrical.co.uk

info@cookselectrical.co.uk



UNIT 1B INDUSTRIAL ESTATE, AYLSHAM NR11 6SS

website
AylshamComputers&design

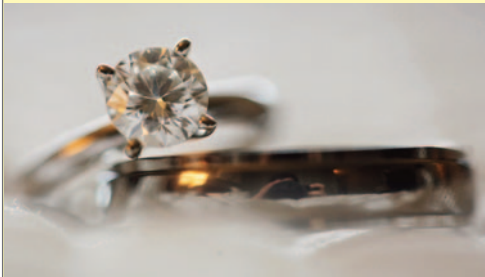
- Apple & PC Computer Repairs
 - New Computer Sales
 - New Printer Sales & Ink
- IT Support Packages from £44 pa
 - Website Design



13c Red Lion Street, Aylsham NR11 6ER **01263 731020**
www.aylshamcomputers.com
service@aylshamcomputers.com

J CHRISTIAN JEWELLERS

54 Red Lion Street, Aylsham Tel: 01263 732295



Repairers of all jewellery, watches and clocks.
Gold buying centre.
Secondhand jewellery bought and sold.

Dig In

take away & catering service

Freshly made

Sandwiches & Rolls

Salads

Monday to Saturday 8am-2pm

01263 735782

1 Blofield Loke, Aylsham



NORFOLK SEWING MACHINE SERVICE

ALL MAKES REPAIRED
HIGHLY SKILLED ENGINEERS
OVER 30 YEARS EXPERIENCE
FULLY GUARANTEED
FREE ESTIMATES

01263 584113



Lavenders Blue Specialist Florist

*Modern Thinking
Traditional Skills*

7 Red Lion Street
Aylsham
NR11 6ER

Tel: 01263 735593
lavvyblue@cloud.com
www.lavendersblueflorist.co.uk

ANN COLMAN CRAFTY CARDMAKING

64 Yaxleys Lane, Aylsham NR11 6DY

Cardmaking classes – beginners welcome
(booking essential) or visit by appointment
for materials, tools and advice.

See my Facebook page for details.

Tel: 01263 735518 or 07789 224341
Email: anncolman433@btinternet.com
fb: [anncolmancraftycardmaking](https://www.facebook.com/anncolmancraftycardmaking)

Celebrations

Cards, gifts and balloons



5 Market Place, Aylsham
Tel: 01263 734505

CAROUSEL CHOCOLATES

6 Red Lion Street, Aylsham, Norfolk NR11 6ER
01263 735737



Luxury Chocolates & Norfolk Truffles
The ideal gift for any occasion
Buy in store or online at
www.carouselchocolates.co.uk

the DOG STOP

Bath and Blow Dry | One to One Grooming
Clipping | Nail Cutting | Ear Plucking

36 Red Lion Street, Aylsham NR11 6ER
Tel: 01263 735254



Aylsham Cycle Centre

Open Every Sunday

01263 731731

www.aylshamcycles.co.uk

sales@aylshamcycles.co.uk

2 White Hart Street,

Aylsham NR11 6HG

BOND'S
Chip shop

Fish & Chips
Fried Chicken
Kebabs
Burgers

Tel: **01263 - 735361**
28 Red Lion st, Aylsham, Norfolk NR11 6ER



J.D. Hall
Tree surgery,
Fencing & Landscapes

Tel: 01603 870957

Mob: 07876 566586

All manner of tree services undertaken, including crown reduction and thinning, lopping and felling.

Fencing and decking. Lawns, patios and driveways. Hedges and shrubs pruned and trimmed.



STAY FIT + KEEP LOCAL

A community of familiar faces; improving fitness and well-being together...

- Open 6 days a week
- Cardio and weights areas
- Classes include:
 - Barbells
 - Kettlebells
 - Circuits
 - Yoga
 - Pilates
 - Keep fit
- Monthly membership – no contract
- Personal Training
- Next to the Fire Station, Cawston Road, near town centre

Registered Charity Number: 1193277

www.aylshamcommunitygym.co.uk

07895 759100

aylshamgym@gmail.com



Publishing is our business



Falcon Publications

Tel: 01379 773347 (Advertising), 01379 773348 (Editorial)

01379 831158 (Accounts), 01379 788648 (Distribution)

info@falconpublications.co.uk

www.falconpublications.co.uk



Follow us - falconpublications@artseastmag



A-Z Directory of Advertisers

AGRICULTURE & CONSTRUCTION

p18 Ben Burgess

ARCHITECTURAL SERVICES

p36 Richard C Anderson-Dungar

ARTS & CRAFTS

p43 Ann Colman Crafty Cardmaking

p20 Broadland Framers & Gallery

BICYCLES

p44 Aylsham Cycle Centre

BOOK SHOPS

p20 Norfolk Children's Book Centre

BUILDERS MERCHANTS

p38 CT Baker

BUTCHERS

p6 Coxfords Butchers

CARD SHOPS

p43 Celebrations

CAR REPAIRS & SERVICES

p26 Dunkirk Garage

p20 JLH Autos

CHOCOLATIERS

p43 Carousel Chocolates

COMPUTERS & WEBSITE DESIGN

p42 Aylsham Computers

DOG GROOMING

p43 The Dog Stop

ELECTRICAL GOODS & SERVICES

p42 Cooks Electrical

p6 jb Postle

ESTATE AGENTS

p48 Trett Phillips

FINANCIAL CONSULTANTS

p10 Alan Cook Financial Services

p2 Clearview Financial Consultants

FIRES & FIREPLACES

p6 Heatcraft Anglia Ltd

FISH DELI

p18 M's

FLORISTS

p43 Lavenders Blue

FUNERAL DIRECTORS

p30 Ivan Fisher

GARAGE DOORS

p26 TWF Roller Garage Doors

GROUNDS CARE EQUIPMENT

p18 Ben Burgess

GYMS

p44 Aylsham Community Gym

HOLIDAY COTTAGES

p28 The Blind Pig Cosy Cottage

JEWELLERS

p42 J Christian Jewellers

LADIES FASHION

p32 Blossom & Green

OPTICIANS

p16 Cecil Amey

p32 Murdoch Opticians

PROBATE, ATTORNEY & WILL SERVICES

p2 Martin Smith

PUBLISHING

p45 Falcon Publications

REMOVALS & STORAGE

p18 Sovereign Removals

RESTAURANTS

p28 The Blind Pig

p30 The New Forge

SEWING MACHINE SERVICES

p43 Norfolk Sewing Machine Service

SOCIAL CLUBS

p18 Aylsham Social Club

SOLICITORS

p36 Hansells Solicitors

p47 Spire Solicitors

SUPERMARKETS

p38 CT Baker Budgens of Aylsham

TAKEAWAYS & CATERING

p44 Bond's Chip Shop

p42 Dig In

TREE SURGERY

p44 JD Hall

TRAVEL AGENTS

p32 Wroxham Travel

VISITOR ATTRACTIONS

p34 Blickling Estate

p34 Bure Valley Railway

p10 Mannington Estate

p10 Redwings Horse Sanctuary

WINE & COCKTAIL BARS

p28 The Blind Pig

p18 M's

SPIRE

SOLICITORS^{LLP}

Local. Legal. Personable.

- Agriculture & Estates
- Charities & Social Enterprise
- Commercial Property
- Corporate & Commercial
- Debt Recovery
- Dispute Resolution
- Employment Law
- Family Law
- Residential Conveyancing
- Wills, Tax & Probate

Attleborough | Aylsham | Dereham | Diss | Norwich | Watton | Wymondham



01263 732123



WWW.SPIRESOLICITORS.CO.UK

Start your
JOURNEY
with us...



...and create memories that will last forever.

Talk to us now about how we can get you moving.

Stalham 01692 531400
Aylsham 01263 801330
trettphillipsresidential.co.uk
sales@trettphillipsresidential.co.uk

